




JONATHAN PINE SCOTT COMMUNITY PARK
ORANGE COUNTY, FLORIDA

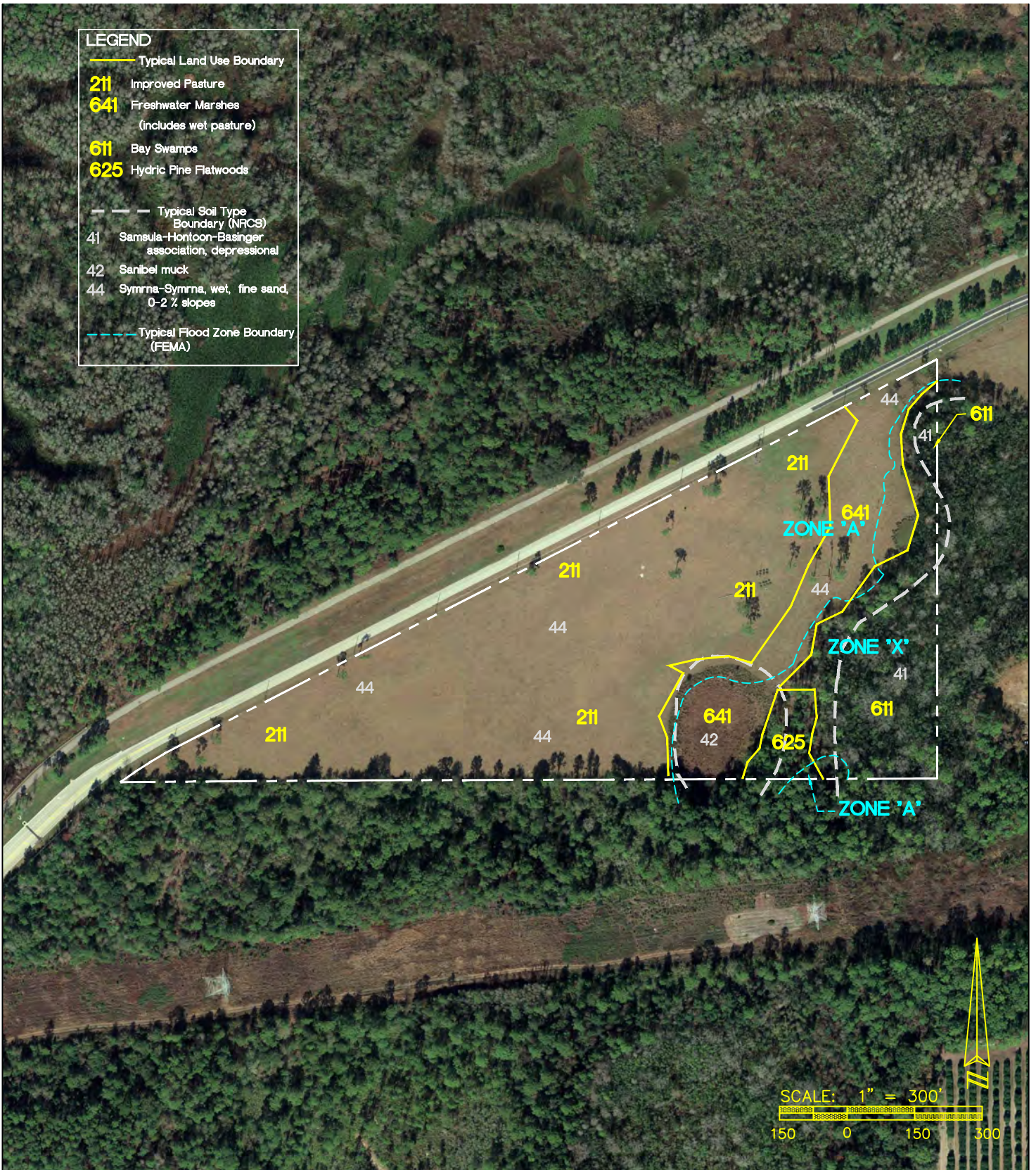
Base Map Source: TOPO MAP

Yvonne J. Froscher

FIGURE 1: U.S.G.S. VICINITY MAP

Environmental Consultant
P.O. Box 195305
Winter Springs, Florida 32719-5305
Telephone: 407-327-2020 FAX: 407-327-1718

LEGEND	
	Typical Land Use Boundary
211	Improved Pasture
641	Freshwater Marshes (includes wet pasture)
611	Bay Swamps
625	Hydric Pine Flatwoods
	Typical Soil Type Boundary (NRCS)
41	Samsula-Hontoon-Basinger association, depressional
42	Sanibel muck
44	Symrna-Symrna, wet, fine sand, 0-2 % slopes
	Typical Flood Zone Boundary (FEMA)

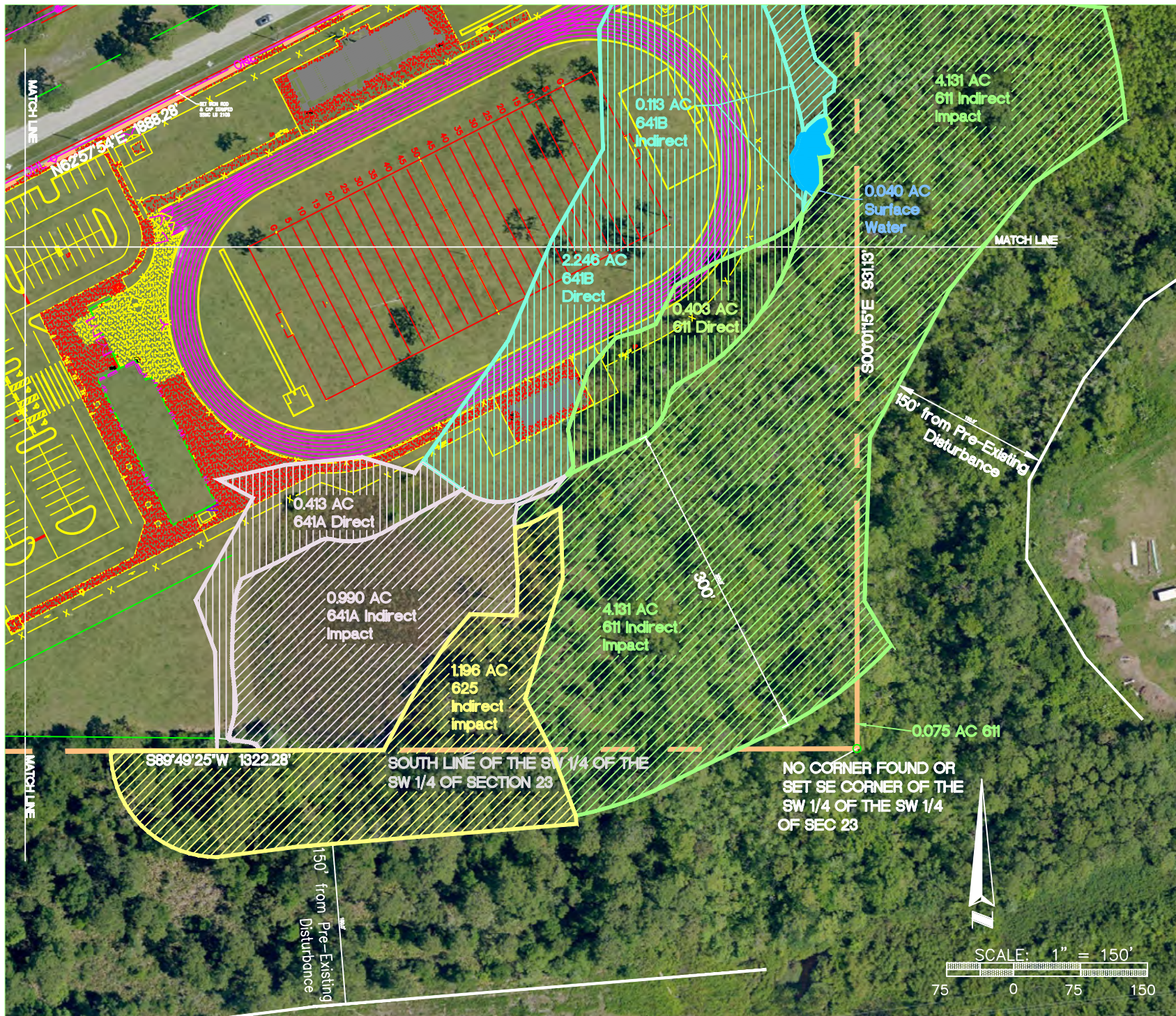


JONATHAN SCOTT PINE COMMUNITY PARK
ORANGE COUNTY, FLORIDA

Base Map Source: FDOT 2012 APLUS

Yvonne J. Froscher
Environmental Consultant
P.O. Box 195305
Winter Springs, Florida 32719-5305
Telephone: 407-327-2020 FAX: 407-327-1718

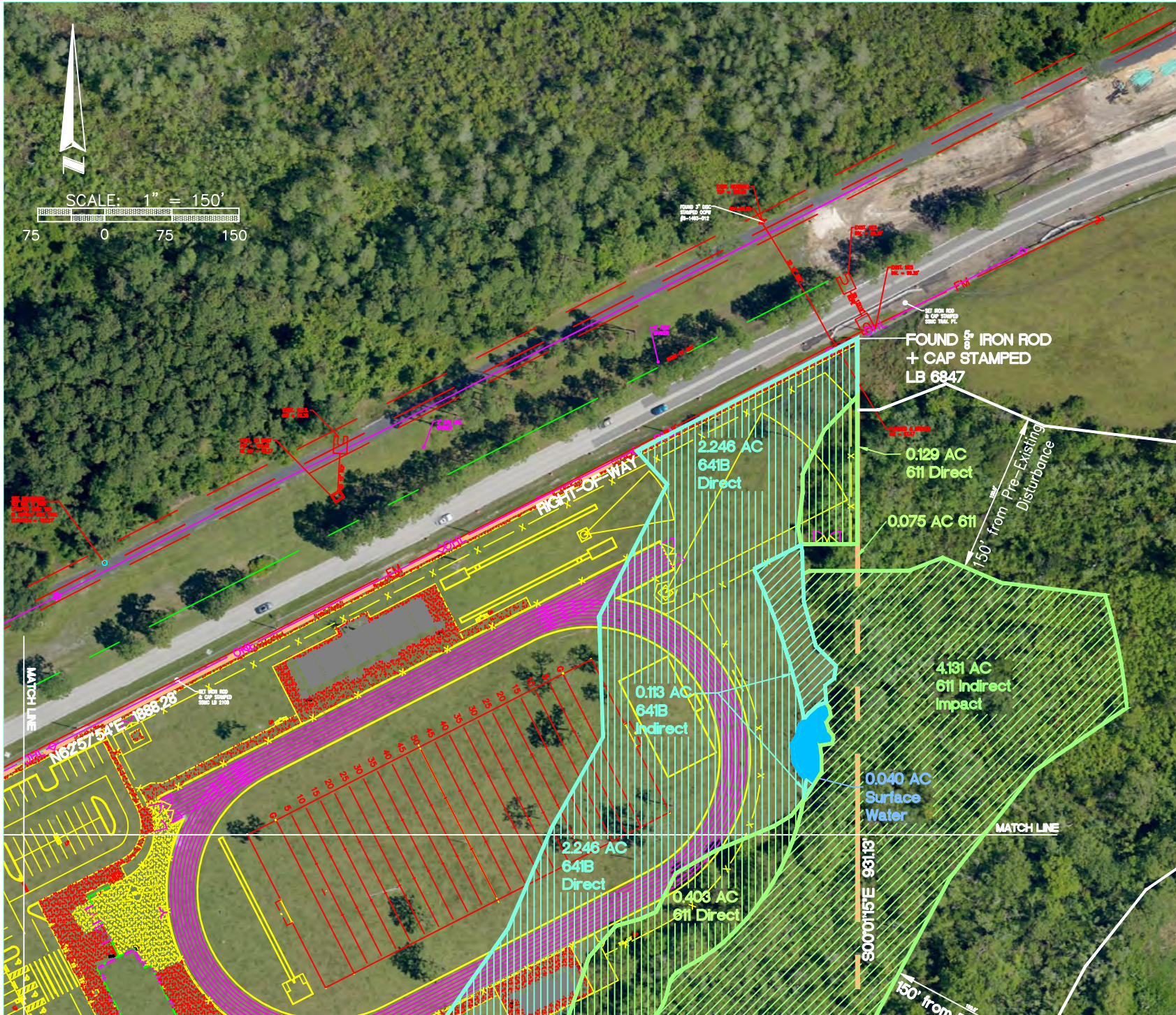
FIGURE 2: NATURAL FEATURES MAP



Yvonne I. Froscher
 Environmental Consultant
 P.O. Box 195309
 Winter Springs, Florida 32719-5305
 Telephone: 407-327-2020 FAX: 407-327-1718

SITE PLAN WITH WETLAND IMPACTS
ORANGE COUNTY DEPUTY JONATHAN SCOTT PINE COMMUNITY PARK
 ORANGE COUNTY, FLORIDA

Revised 11/22/16 COE
 Revised 11/1/16
 Revised 10/30/16
 Drawn by:
 YIF **EN-102**



Base Map Source: Orange County InfoMap
 Base Site Plan Source: SK Consortium, Inc. dwgs provided to Yvonne I. Froscher 11/1/16

Yvonne I. Froscher
 Environmental Consultant
 P.O. Box 195339
 Winter Springs, Florida 32719-5305
 Telephone: 407-327-2020 FAX: 407-327-1718

SITE PLAN WITH WETLAND IMPACTS

ORANGE COUNTY DEPUTY JONATHAN 'SCOTT' PINE COMMUNITY PARK
 ORANGE COUNTY, FLORIDA

Revised 11/22/16 COE
 Revised 11/1/16
 Revised 10/30/16
 Drawn by:
 YIF **EN-103**